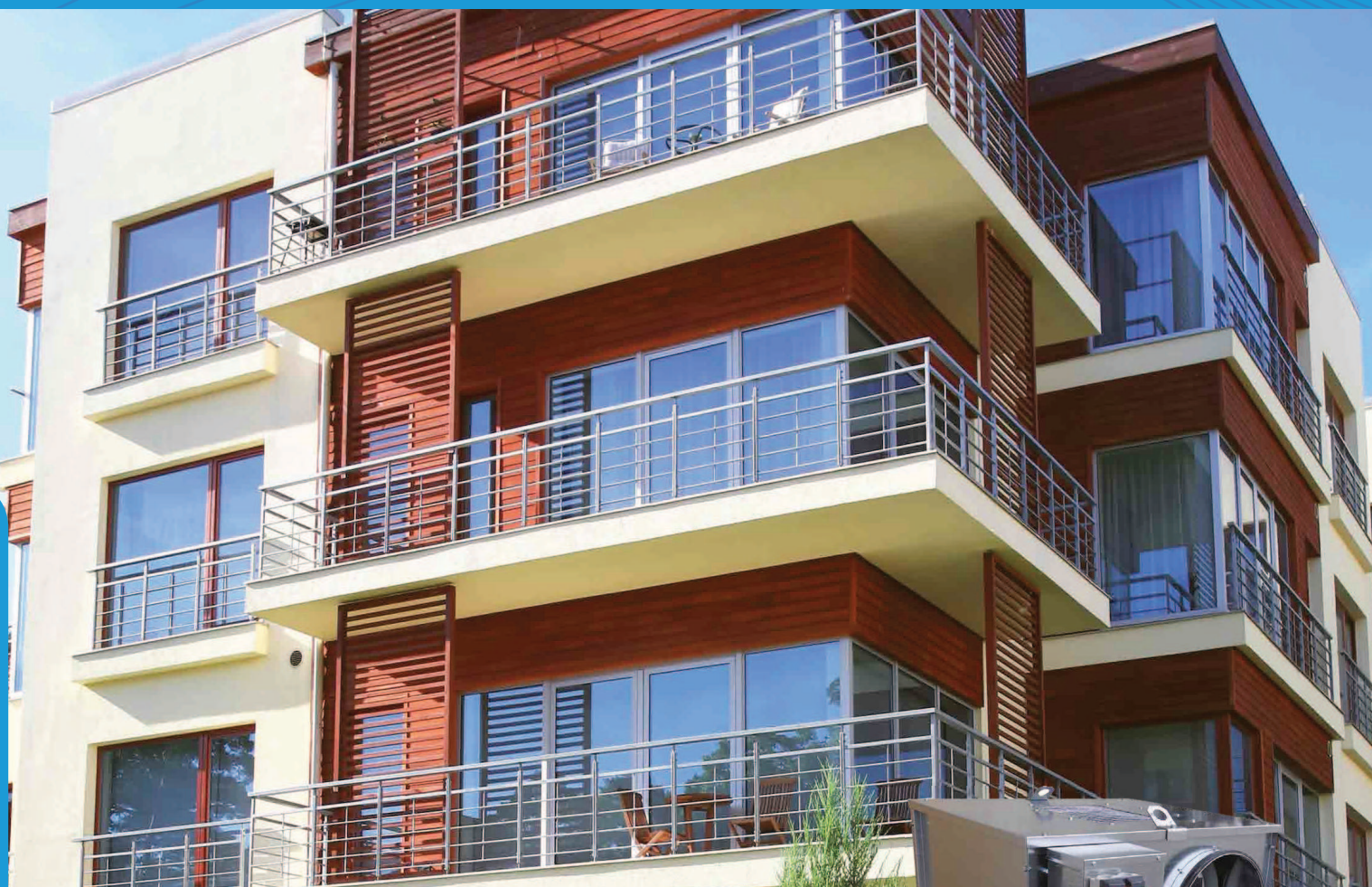


# EXTRACTION CHAMBERS

APPROVED TO CATEGORY 4, 400°C - 1/2 hr



## VMCM R-Control 4800 to 8200

C4 APPROVED, 400°C - 1/2 H FOR COLLECTIVE HOUSING AND ERP - PV CSTB  
NO. RS06-197 - EXT. 07/01 - REC 12/1

COMPATIBLE WITH ALL VMC TYPES (SELF ADJUSTING, HUMIDITY  
CONTROLLED A AND B, GAS)

VERY LOW ELECTRICITY CONSUMPTION (UP TO 40 % ENERGY SAVING)

PRESSURE CONTROLLED OVER THE WHOLE RANGE OF FLOW RATES  
(FLAT CURVES)

SEALED BRANCH PIPE CONNECTIONS FOR REINFORCED  
AIRTIGHTNESS OF THE NETWORK

EASY INSTALLATION

SINGLE PHASE POWER SUPPLY

# COLLECTIVE ACCOMMODATION

Category 4 approved extraction chambers, 400°C - 1/2 h

VMCM R-Control 4800 to 8200



COLLECTIVE  
HOUSING



TERTIARY  
BUILDING



COMFORT  
AND C4 APPROVED



LOW CONSUMPTION  
MOTOR



LOW CONSUMPTION  
BUILDING



The VMCM R-Control 4800 to 8200 chambers, approved to 400°C -1/2 h, are specially designed for the extraction of air flows in collective housing and tertiary buildings. They are compatible with any type of VMC: self-adjusting, humidity-controlled (depending on technical recommendation) with or without gas boiler. They allow compliance with the requirements of the New Acoustic Regulations (NRA) and DTU 68.3. In addition to the energy savings achieved, this technology also greatly limits the excess pressure at minimum flow rate for each installation (reduces noise at vents). Adjusting the pressure setting is done very easily. They are installed mainly in attics or on building terraces.

## DESCRIPTION

- Controlled pressure extraction chamber (single phase power supply), approved to 400°C - 1/2 h
- R-Control unit delivered pre-cabled inside the chamber (maximum protection during transport)
- Electronic pressure regulation due to the R-Control system
- Pressure setting adjustment
- Motor / impeller set access hatch
- Back-up belt delivered with the chamber
- 2 circular intakes on the side, discharge on the top
- Easy maintenance with fully removable side panel

## RANGE

3 models: VMCM 4800,  
VMCM 6500, VMCM 8200 R-Control

Flow rates: from 200 to 8500 m³/h

Max flow rate in m³/h at 100 Pa.

**VMCM 4800 R-Control** jusqu'à 4800 m³/h

**VMCM 6500 R-Control** jusqu'à 6500 m³/h

**VMCM 8200 R-Control** jusqu'à 8200 m³/h

## CONSTRUCTION

- Galvanized steel casing
- Double inlet centrifugal impulse impeller, mounted on silent blocks
- Pulley-belt transmission with variable diameter driving pulley
- Three phase 230 / 400 V 1500 rev/min, IP 55, class F motor, with factory precabled R-Control unit
- Protective flyscreen grill at discharge
- Circular branch pipe connections with seal
- Series mounted local switch
- attachment feet

### Standard accessories



- Circular branch pipe connections with seal



Local switch provides local isolation during maintenance operations.

## INSTALLATION

- Internal (attics, false-ceiling, equipment room, etc) and external (terrace) installation without additional accessories
- Lifting points allowing craneage of the equipment

153

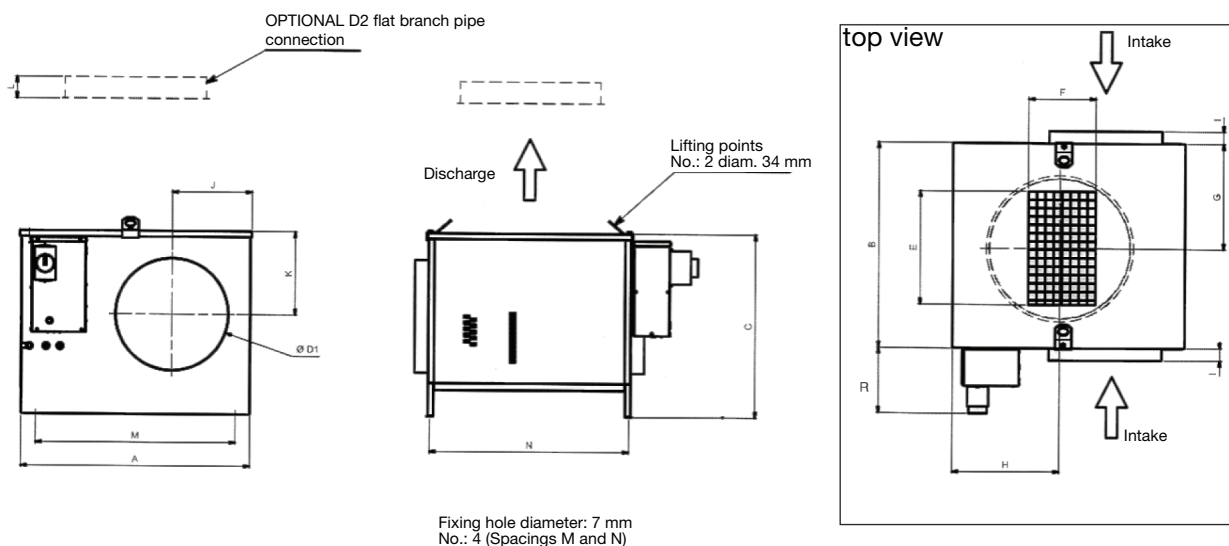
Prices  
p 169

# COLLECTIVE ACCOMMODATION

Category 4 approved extraction chambers, 400°C - 1/2 h

## VMCM R-Control 4800 to 8200

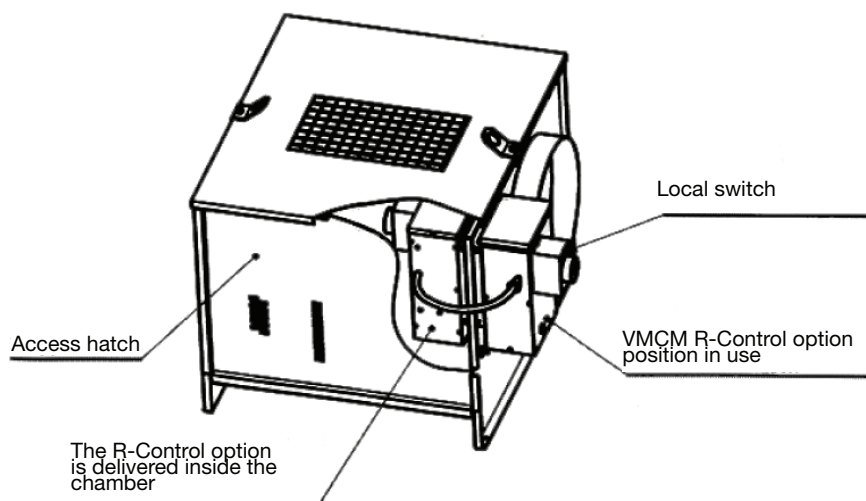
### DIMENSIONS



	A	B	C	D1	D2	E	F	G	H	I	J	K	L	M	N	R	Weight (kg)
VMCM 4800	829	738	657	<b>400</b>	500	407	240	378	392	<b>45</b>	280	299	78	713	715	234	<b>64</b>
VMCM 6500	950	853	727	500	630	483	287	435	487	<b>52</b>	281	299	85	777	833	234	78
VMCM 8200	950	853	727	500	630	483	287	435	487	<b>52</b>	281	299	95	777	833	234	84

### PRODUCT INFO

the R-Control unit is delivered pre-cabled inside VMCM unit for maximum protection during transport



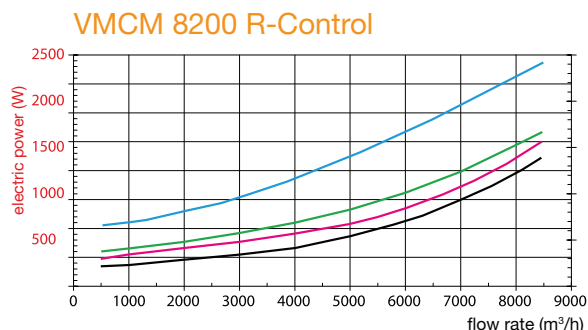
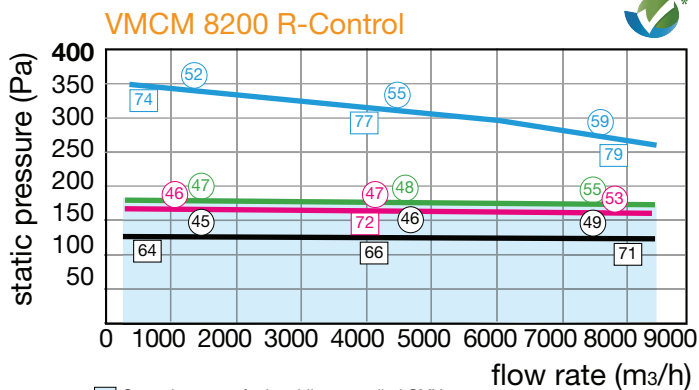
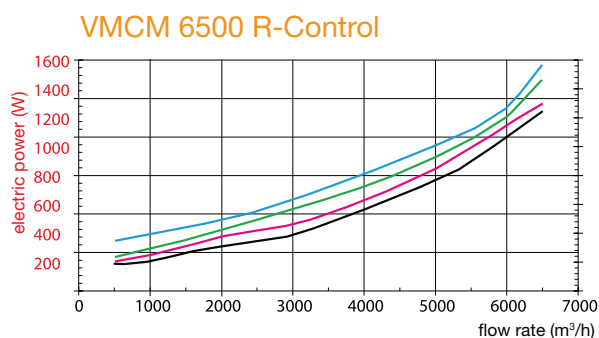
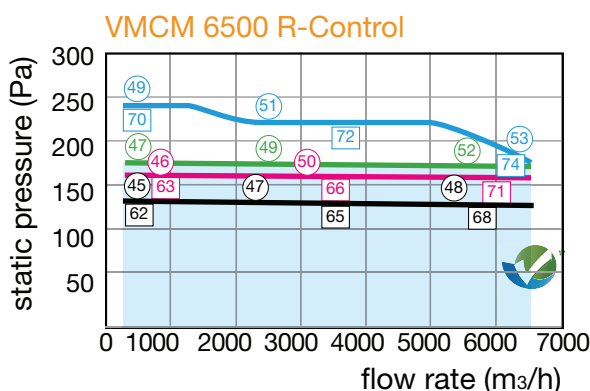
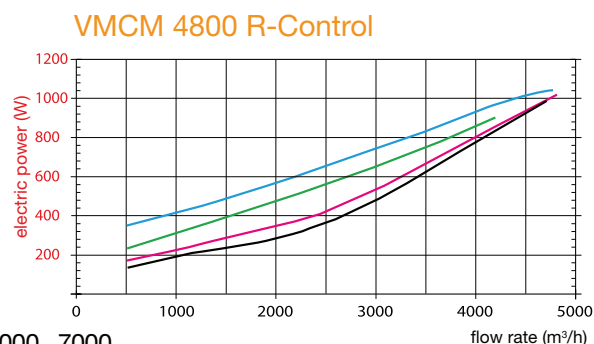
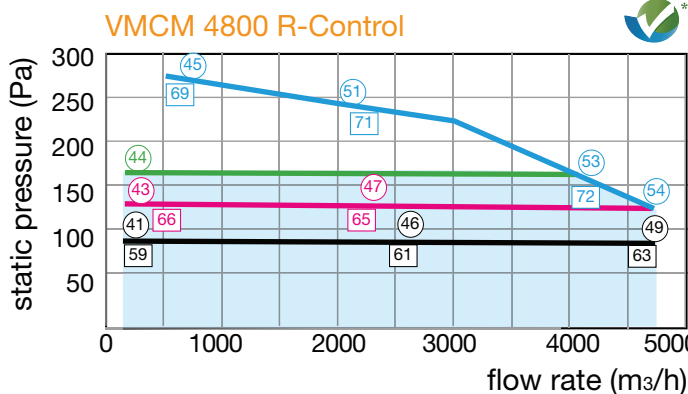


# COLLECTIVE ACCOMMODATION

Category 4 approved extraction chambers, 400°C - 1/2 h

## VMCM R-Control 4800 to 8200

### VENTILATION AND POWER CONSUMPTION FEATURES



■ Operating range for humidity controlled CMV

○ Sound pressure level in free air at 4 m, Lp in dB (A) intake connected  
 □ Radiated acoustic power level in the duct, Lw in dB(A)

€\* The products marked with this logo comply with the performance display recommendations defined by Uniclima.

155

Prices  
p 169

# COLLECTIVE ACCOMMODATION

Category 4 approved extraction chambers, 400°C - 1/2 h

VMCM R-Control 4800 to 8200

## ELECTRICAL FEATURES

	VMCM 4800	VMCM 6500	VMCM 8200
impeller type	AT 12/12S	AT 15/15S	AT 15/15S
transmission:			
• driving pulley	108	108	120
• impeller pulley	160	200	180
motor power (W)	0.75	1.1	2.2
power supply	Single phase 230 V - 1 Ph - 50 Hz		
max current (A) at controller input:	7.6	11.8	14.3

## ACCESSORIES

### Connection accessories



Flexible sleeve (400°C - 2 h) avoids any transmission or residual vibrations from the unit to the duct system.



Galvanised steel rigid sound trap situated on the inlet, reduces transmission of any sound to the system.

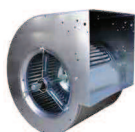


Circular discharge collar allows discharge connection to an external air outlet on façade or roof.

### Optional accessories



Three phase 1 speed backup motor sometimes necessary to respond to requirements in terms of after sales service response times.



Backup impeller sometimes necessary to respond to requirements in terms of after sales service response times.



Backup belt compulsory to comply with the standard (one supplied with delivery)

### Optional accessories



Anti-vibration mounts avoid the transmission of any vibrations from the unit to its environment.



Pressure sensor kit indicates the unit's operating status by measuring its depression with information feedback. Factory fitted, it can be installed later in the kit version (installation compliance upgrade).

Gas pressure sensor, compulsory for gas CMV, it indicates the unit's operating status by measuring its depression with information feedback. It is factory fitted.



Fixed impeller pulley sometimes necessary to respond to requirements in terms of after sales service response times.



Adjustable motor pulley sometimes necessary to respond to requirements in terms of after sales service response times.