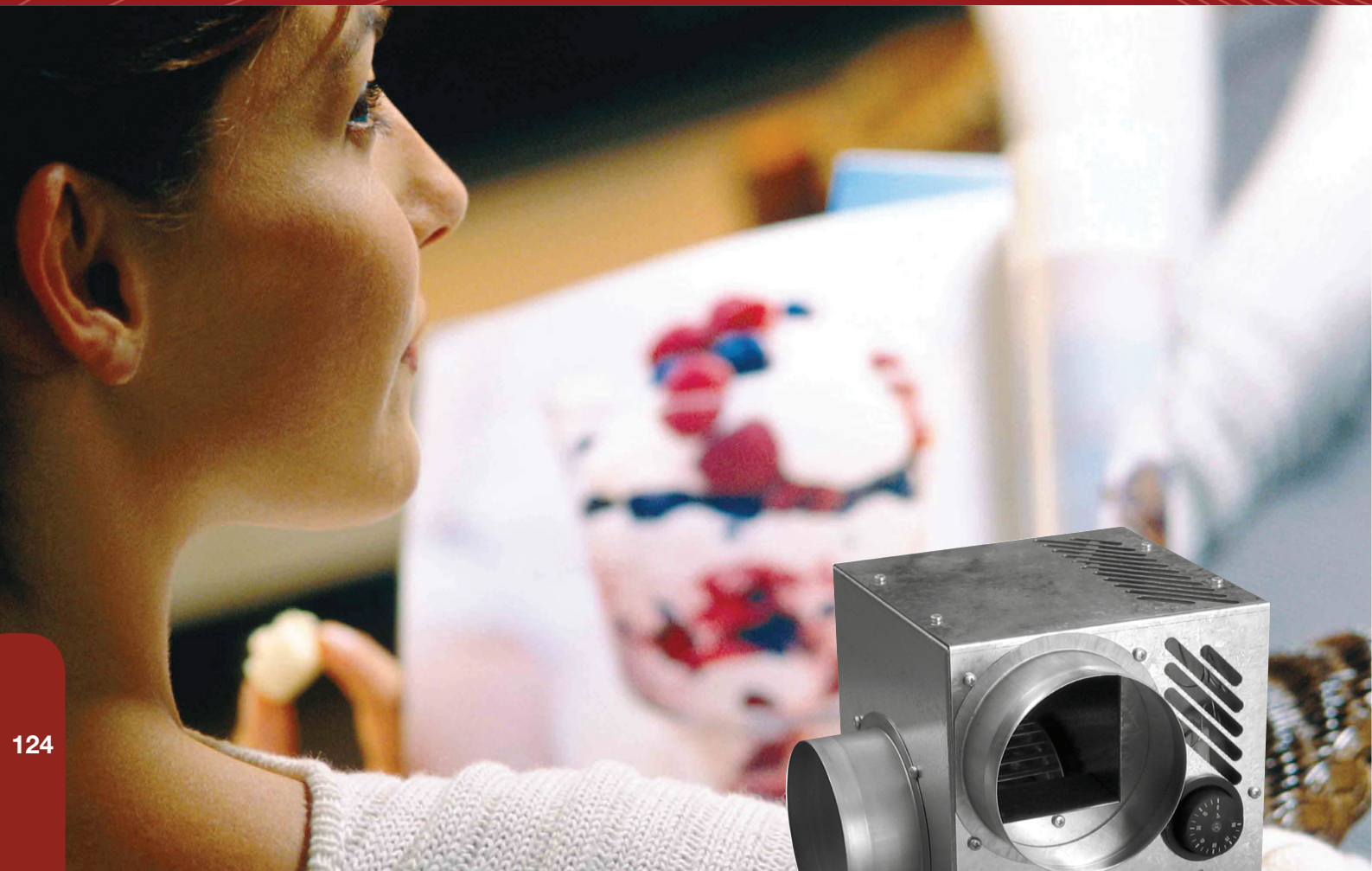
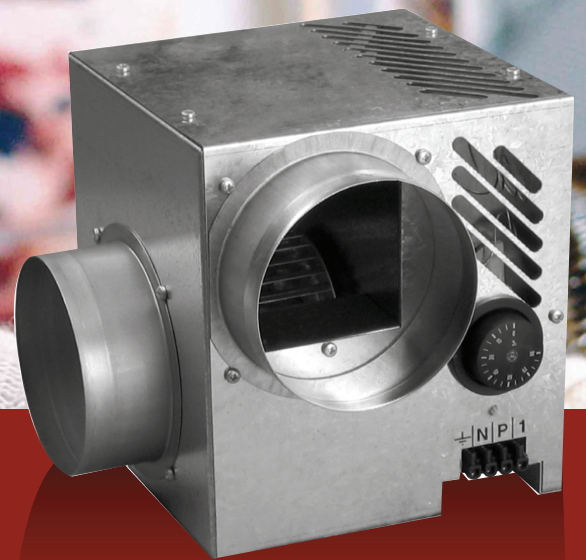


# HOT AIR DISTRIBUTOR FOR CHIMNEYS WITH A CLOSED FIREPLACE



124

## DIFUZAIR



\_\_\_\_\_ **Economical**, both to buy and use

\_\_\_\_\_ **Optimise** your wood heating system (ENR)

\_\_\_\_\_ **Improved heat distribution** throughout the building

\_\_\_\_\_ **Operates independently** (adjustable thermostat)

\_\_\_\_\_ **Easy** to install

\_\_\_\_\_ **Silent**

**NATHER**

# HOT AIR DISTRIBUTION

Hot air distributor for chimneys with a closed fireplace

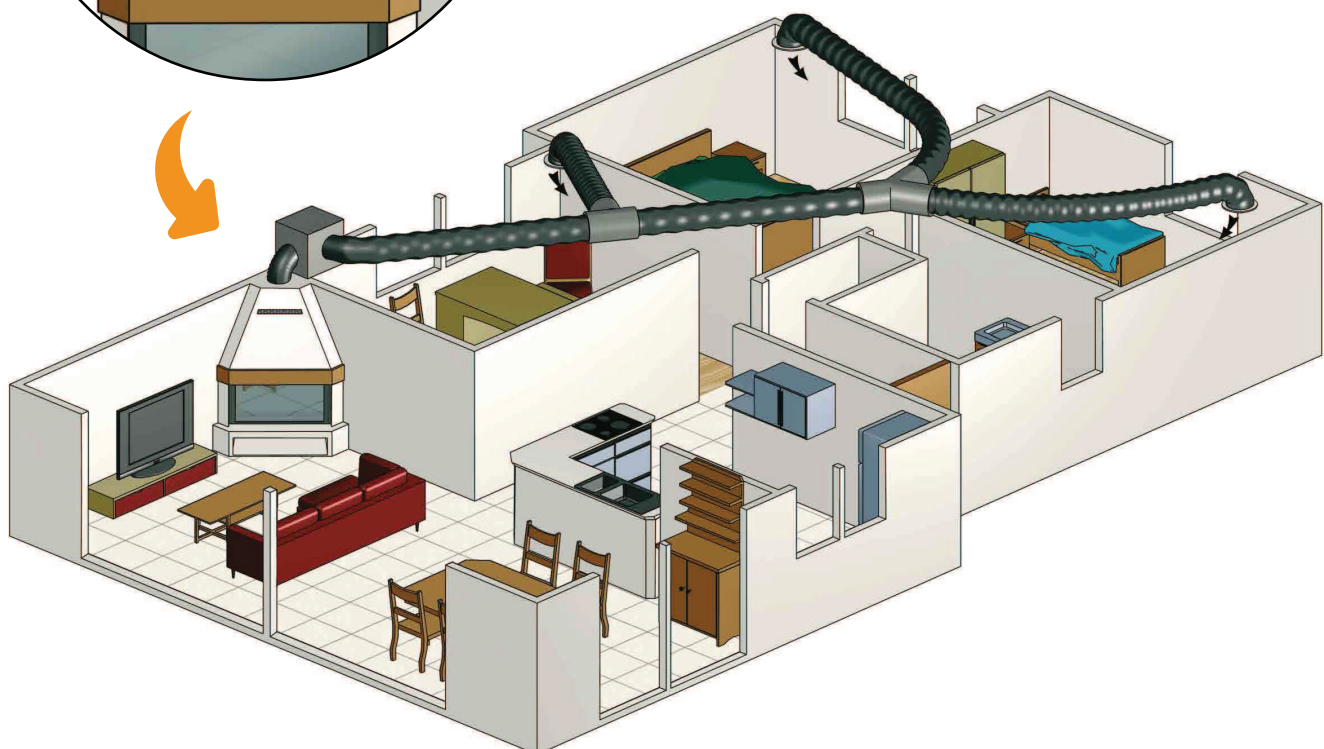
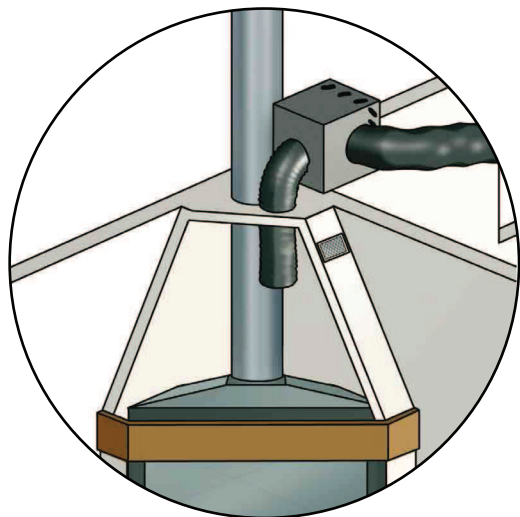
**DIFUZAIR**

**OPTIMISE** your chimney and **GUARANTEE** heating throughout your house with the **DIFUZAIR**

## How does it work?

The principle of hot air distribution involves distributing the heat produced by a chimney with a closed fireplace into the main rooms of the building. Hot air distributors thus guarantee heating throughout the entire house by distributing the captured hot air in an optimal manner.

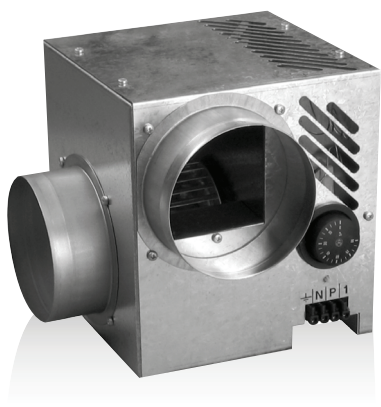
This helps you to reduce your heating bills, obtain improved heat distribution and optimise the yield of your chimney. Easy to install, they either replace or complement other heating systems, running independently according to the programmed thermostat.



# HOT AIR DISTRIBUTION

Hot air distributor for chimneys with a closed fireplace

## DIFUZAIR



HABITAT  
INDIVIDUEL



AIR CHAUD



ECONOMIE  
D'ENERGIE



RECUPERATION

The DIFUZAIR distributes the heat produced by your chimney equipped with a closed fireplace into the main rooms (living room/ lounge/office/bedrooms) of your home, improving your comfort and ensuring homogeneous heat distribution.

Usually installed in lofts, the equipment operates independently thanks to its adjustable standard thermostat.

### BUILDING / DESCRIPTION

- Galvanised steel sheet envelope
- 25 mm thick glass wool insulation for the engine compartment
- Rotary motor with external rotor
- Centrifugal impulse turbine
- Electricity cable with plug connectors and coding system
- Adjustable thermostat from 0-90°C
- Maximum allowable temperature: 180°C

### RANGE AND SELECTION

3 models: D320, D520, D820

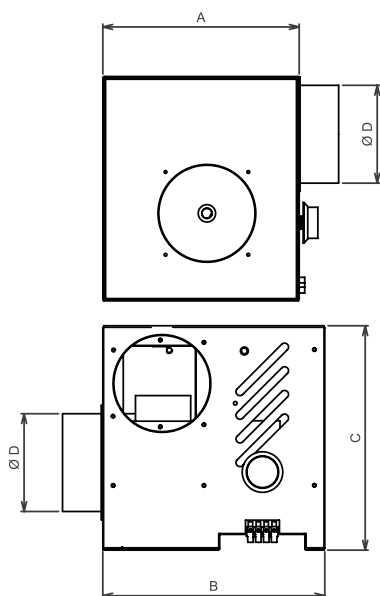
The selection is made according to the number of rooms requiring heating

**D320** 2 to 3 entrances

**D520** 3 to 5 entrances

**D820** 5 to 8 entrances

### DIMENSIONS



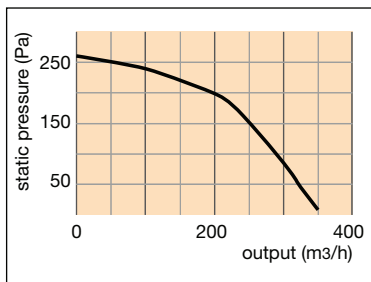
Models	A	B	C	D	Weight (kg)
<b>D320</b>	209	213	230	125	5
<b>D520</b>	248	280	284	125	8
<b>D820</b>	286	336	336	160	10.5

# HOT AIR DISTRIBUTION

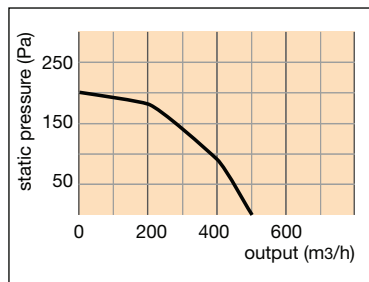
Hot air distributor for chimneys with a closed fireplace

## DIFUZAIR

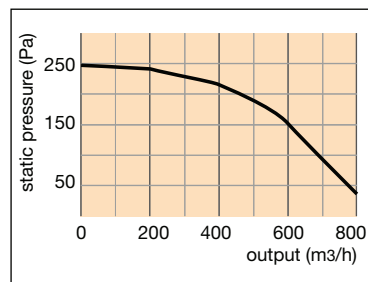
### ▶ VENTILATION FEATURES



**D320**



**D520**



**D820**

### ▶ ELECTRICAL FEATURES

Features	D320	D520	D820
Maximum output (m3/h)	350	500	800
power consumption (W)	57	68	98
current consumption (A)	0,28	0,38	0,59
condenser ( $\mu$ F)	2	1,5	3,15
rotation speed (tr/mn)	2050	1220	1270

### ▶ ACCESSORIES



The remote temperature sensor instantly measures the drawing temperature in the hood and switches the DIFUZAIR on or off as appropriate, within a set range of 40°C



The electronic converter (speed 1 A) can vary the power supply voltage of the DIFUZAIR and thus change the nominal output



The remotely programmable thermostat allows users to adjust the temperature settings and measure the drawing temperature at hood level instantly



The 2 speed condenser kit provides 2 operating speeds (reduced output)