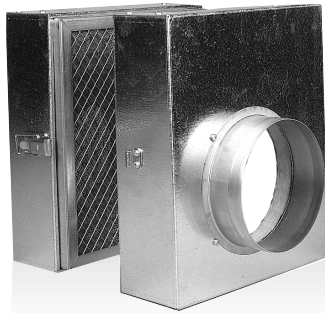


HOT AIR DISTRIBUTION

Filtering chambers

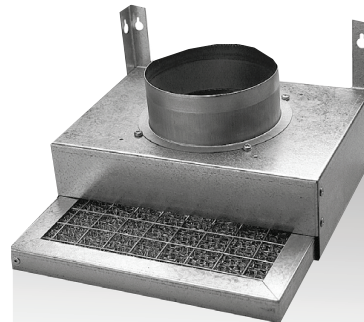
CF 125/160 - FE 125/160

CF125
CF160



Filtering chambers for hot air distributor

FE125
FE160



FE125/160 is integrated into the hood of the closed fireplace and connects to the drawing duct

BUILDING / DESCRIPTION

- galvanised steel sheet construction
- 25 mm thick glass wool insulation
- medium filters with a large surface area and at maximum retention capacity
- rapid opening thanks to two lateral hooks

BUILDING / DESCRIPTION

- galvanised steel sheet construction
- medium filters with a large surface area and at maximum retention capacity
- medium filters mounted on rails, for easy access and cleaning

RANGE

- CF 125 for D320 and D520
- CF 160 for D820

RANGE

FE 125/160: two options available
connectors for D320 - D520 - D820

DIMENSIONS

Modèles	A	B	C	ø D	Weight (kg)
CF125	286	200	336	125	5
CF160	286	200	336	160	5
FE125/160	255	180	80	125/160	1.5

